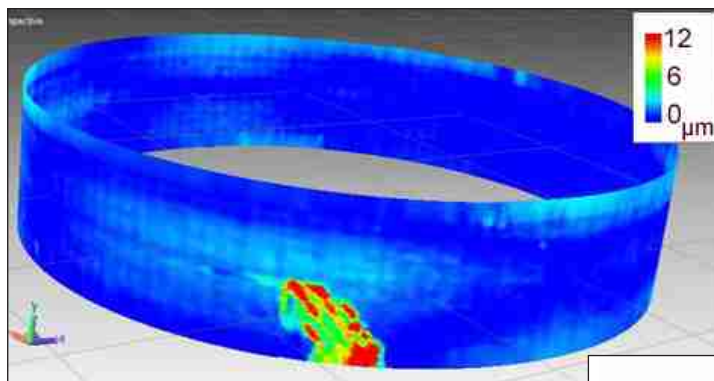
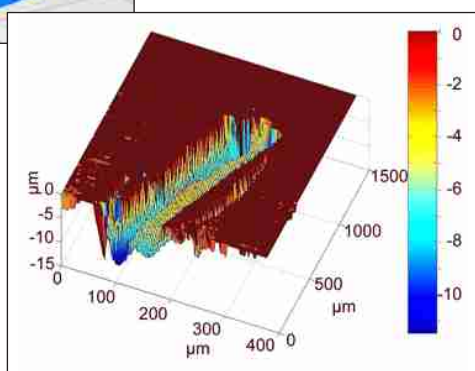


Applications:
Automotive / Interior

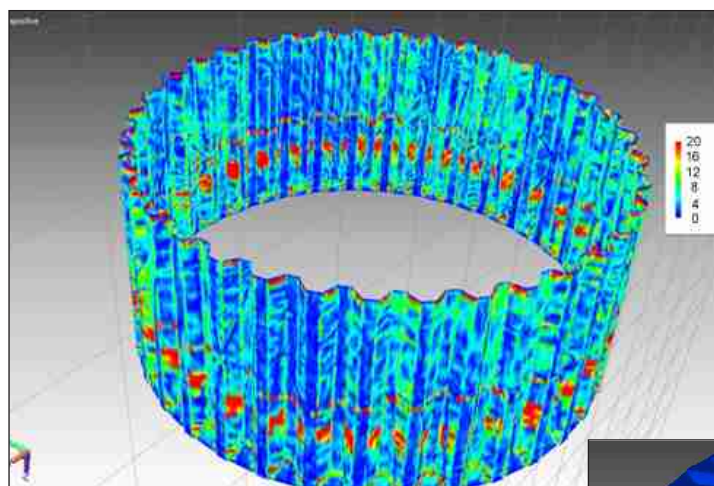
3D topography and actual-target shape comparison from a small cylinder with scratch



Detail 3D topography of the surface of a small cylinder (diameter: 3 mm) including a scratch. The maximum discrepancy from the ideal cylinder was 12 μm (at the scratch) as shown on the false color bar. The zoomed 3D representation exhibits further details.



Actual target-shape comparison and 3D topography from an inner crank



Actual target shape comparison (left) and detail 3D topography of the surface of an inner crank (diameter: 25 mm, below). According to the false color bar, the maximum deviation from the ideal shape amounts to 20 μm . The heights of the individual teeth are 1 mm.

